

FUNCTIONS AT

# - THE GLEBE HOTEL—





Neighbourhood watering hole, The Glebe Hotel has been Glebe's favourite local since 1862.

Formerly known as the Australian Youth Hotel, the heritage listed public bar and dining destination is full of quirk, character and charm.

Recently renovated by Alexander & Co, The Glebe Hotel offers everything you are looking for in a local pub. With gastro pub fare and a warm welcome, the venue hosts a traditional public bar, private dining in the heritage listed stables & loft, a leafy beer garden and Nude, our dedicated function & cocktail bar.

**P:** +61 2 9692 0414

**E:** [info@theglebehotel.com.au](mailto:info@theglebehotel.com.au)

**A:** 63 Bay Street, Glebe 2037

[@glebehotel.com.au](https://www.theglebehotel.com.au)

**THE GLEBE**  
HOTEL







#### AMENITY KEY

- ◆ AC
- ◆ Gas heaters
- ◆ Wood burning fireplace
- ◆ Outside
- ◆ HDTV
- ◆ AV
- ◆ Accessibility
- ◆ Bathroom
- ◆ Bar access
- ◆ Smoking

**THE GLEBE**  
HOTEL







## STABLES BAR & DINING ROOM

Accessibility, AC, Fireplace, AV, Bar, Toilets

Housed within The Glebe Hotel is the venues' formal dining destination, The Stables Bar & Dining Room with mezzanine Loft (originally the hotel stables & hay loft).

A beautiful, light and airy dining space with exposed brickwork, Tasmanian Blackwood timber bar, recycled iron bark tables, wood burning fire place and a bespoke jacaranda mural by Sydney artist, Indigo Jo.

Idyllically set with large wooden bi-folding doors that lead out to the beer garden, we can comfortably cater for seated intimate or formal gatherings from 10-42

- ◆ Seated 42
- ◆ Available for exclusive hire
- ◆ Minimum spend \$3,000, lunch
- ◆ Minimum spend \$4,000, dinner



**THE GLEBE**  
HOTEL





## The LOFT

AC, AV, HDTV

Perched above the stables is the original 'hay loft'. This intimate space can be booked exclusively for sit down functions of 20 to 34 persons and comes with its own AV facilities to cater for personal and corporate events.

- ◆ Seated 34
- ◆ Available for exclusive hire, 20+ persons
- ◆ Minimum spend \$1,500, lunch
- ◆ Minimum spend \$2,000, dinner







## THE STABLES BAR & DINING ROOM + LOFT

Accessibility, AC, Fireplace, AV, Bar, Toilets

Beautifully set for seated intimate or formal gatherings our 'dining room & loft' can be combined to cater for seated functions of 45-80 persons.

- ◆ Seated 76 persons
- ◆ Available for exclusive hire, 50+ persons
- ◆ Minimum spend \$4,000, lunch
- ◆ Minimum spend \$7,000, dinner

**THE GLEBE**  
HOTEL







**THE GLEBE**  
HOTEL

### THE STABLES BAR & DINING + BEER GARDEN

Accessibility, AC (DR), fireplace, AV, bar, toilets, outside, heating (BG)

Beautifully set our 'dining room & beer garden' flows seamlessly to afford you a wonderful indoor & outdoor fresco. Ideal for engagements, weddings and corporate events. We'll happily tailor the space to your needs.

- ◆ Seated 60 (BG) + 42 (DR) + 34 (LOFT)
- ◆ Standing 70
- ◆ Available for exclusive hire, 100 -150 persons
- ◆ Minimum spend \$10,000, Jan—Oct
- ◆ Minimum spend \$15,000, Nov—Dec





# THE GLEBE LONG LUNCH

THREE COURSE SHARING MENU + 2 HOUR BASIC BEVERAGE PACK \$79PP\*

LONG LUNCH + A MIMOSA ON ARRIVAL & ESPRESSO MARTINI TO FINISH \$99PP\*\*

TWO HOUR BEVERAGE PACKAGE\*

## SMALL PLATE

*Broad bean & walnut dip, charred snow peas, lemon oil, flatbread (vg, gc)*

## MAIN (select two)

Roast butternut pumpkin *potato sage & goats cheese pie, watercress*

Whole baked snapper baby capers, *lemon & parsley butter (gf, dc)*

Whole thyme & garlic roasted free range chicken, *chicken gravy (gf)*

Twice cooked crisp Berkshire pork belly, *caramelized apple sauce, jus (gf, df)*

12 hour slow braised lamb shoulder, *salsa verde, jus (gf, df)*

## SIDE (select two)

Butter leaf salad, cucumber, chives, *roast garlic & lemon dressing (gf, vg)*

Green beans, roast garlic butter, fresh parmesan *(gf, vgc)*

Roast Dutch carrots, whipped ricotta, walnuts & chives *(gf, vg)*

Shoestring fries (gf)

Champ (gf)

## DESSERT

Eton Mess, *raspberry sorbet, prosecco jelly (gf)*

8+ PERSONS (48 HOURS NOTICE)

MENU'S ARE SUBJECT TO SEASONAL CHANGE

YOUR 2HR BEVERAGE TAB IS CAPPED AT \$40PP\* / \$60PP\*\* RESPECTIVELY

Once this amount is reached you have the option to add to your tab or revert to a cash bar





## TWO COURSE SHARING MENU \$50 PER PERSON

MAIN + SIDE (Mon—Friday, lunch only) \$38 PER PERSON

ADD DESSERT + \$10 PP

### SMALL PLATE

Broad bean & walnut dip, *charred snow peas, lemon oil, flatbread (vg, gc)*

Crisp fried calamari, *chilli & black lime salt (gf)*

Steak tartare, *cured egg yolk, toast*

### MAIN (select two)

Roast butternut pumpkin *potato sage & goats cheese pie, watercress*

Whole baked snapper baby capers, *lemon & parsley butter (gf, dc)*

Whole thyme & garlic roasted free range chicken, *chicken gravy (gf)*

Twice cooked crisp Berkshire pork belly, *caramelized apple sauce, jus (gf, df)*

12 hour slow braised lamb shoulder, *salsa verde, jus (gf, df)*

### SIDE (select two)

Butter leaf salad, cucumber, chives, *roast garlic & lemon dressing (gf, vg)*

Green beans, *roast garlic butter, fresh parmesan (gf, vgc)*

Roast Dutch carrots, *whipped ricotta, walnuts & chives (gf, vg)*

Shoestring fries (gf)

Champ (gf)

### DESSERT

Eton Mess, *raspberry sorbet, prosecco jelly (gf)*

Or

Selection of two cheeses *served with condiments (gc) +\$5*

8+ PERSONS (48 HOURS NOTICE)

MENU'S ARE SUBJECT TO SEASONAL CHANGE





## TWO COURSE SET MENU \$55 PER PERSON

ADD DESSERT + \$10 PP

### ENTRÉE

Stracciatella di bufala

*roast baby beets, herb dressing, mint oil, crispy basil, croute (gc) (gf, vg)*

Salmon & prawn fish cake

*tartare sauce, pickled cucumber, watercress*

Chicken & pork terrine

*house pickle, chutney, toast (gc)*

### MAIN

House made gnocchi

*snow pea, spinach, pea pesto, macadamia cheese (vg)*

Butterflied sand whiting 'pan fried'

*crispy kipfler,, green beans, preserved lemon & herb butter (gf)*

'Greenstone Creek' eye fillet *\*served pink*

*kipfler potatoes, asparagus & watercress salad, truffle aioli (gf)*

### Family Serve

Champ (gf)

Mixed leaves, house dressing (vg, gf)

### DESSERT

Blueberry pavlova

*blueberry & cream cheese sorbet, lemon curd (gf)*

Salted caramel tart

*macadamia ice cream*

Selection of two cheeses served with condiments (gc) **+\$5**

**8+ PERSONS (48 HOURS NOTICE)**

**20+ PERSONS SELECT TWO E+M TO BE SERVED ON ALTERNATE DROP**

**MENU'S ARE SUBJECT TO SEASONAL CHANGE**







### Public bar

Accessibility, AV, AC, wood burning fireplace, bar, toilets, live music

Our Heritage listed bar conveys a traditional pub scene exuding warmth and friendly bar banter, complete with wooden floor boards, chesterfield sofas, wood burning fireplace and HD flat screen TV's for watching live sports.

Seating up to 50 persons, why not tuck into one of our \$15 weekly bar food specials, a counter meal or a prime cut steak from our char-grill.

Alternatively, our front bar is Ideal for those that like to celebrate with a schooner and get down with some live music.

- ◆ Seated 50
- ◆ Standing 40
- ◆ Partial hire seated 20 + standing 30, no minimum spend
- ◆ Live entertainment, price upon request

**THE GLEBE**  
HOTEL





## BEER GARDEN

Accessibility, AV, Bar, outside, heating

Adjacent to the Stable bar is our leafy beer garden featuring a majestic centenary fig tree, a covered pergola, wooden low bunnetts, high communal bar tables and we've got all your favourite sporting events covered on a 2m HD TV.

Pre-order pizzas / canapes from our catering menu or simply order and pay for your food individually at the bar, our leafy beer garden is ideal for your next outdoor event.

I forgot to mention, we're dog friendly too!

- ◆ Seated 60 persons
- ◆ Standing 25 persons
- ◆ Partial hire seated 30 persons + standing room, no minimum spend
- ◆ Available for exclusive hire, 50-90 persons
- ◆ Minimum spend \$4,000, Jan—Oct
- ◆ Minimum spend \$6,000, Nov—Dec



**THE GLEBE**  
HOTEL







Located upstairs, is Nude, the hotel's private function space, named so after its former life as a brothel in the late sixties. A wonderland of grand chandeliers, baroque sofas and vintage nude art, Nude is available to hire as a whole or semi-space and also features a private snooker and games room.

'Nude' can be split into three different areas to cater for different size functions, Nude Lounge, Midriff and Pool Parlour.

## NUDE LOUNGE

Bar, Live entertainment, bar, AV, AC, toilets

Immediately at the top of the stairs, the largest area of the (Nude) bar features an array of baroque style sofas and showcasing the essence of Nude with a stunning collection of elegant art works.

Nude lounge is ideal for that creative day-time work shop, celebrating a birthday, a hens party, a farewell or an engagement party.

Best catered for from our pizza / canape menus.

- ◆ Seated 30
- ◆ Standing 30
- ◆ Available for exclusive hire, 40-60 persons
- ◆ Minimum spend \$2,000



**THE GLEBE**  
HOTEL





Located upstairs, is Nude, the hotel's private function space, named so after its former life as a brothel in the late sixties. A wonderland of grand chandeliers, baroque sofas and vintage nude art, Nude is available to hire as a whole or semi-space and also features a private snooker and games room.

'Nude' can be split into three different areas to cater for different size functions, Nude Lounge, Midriff and Pool Parlour.

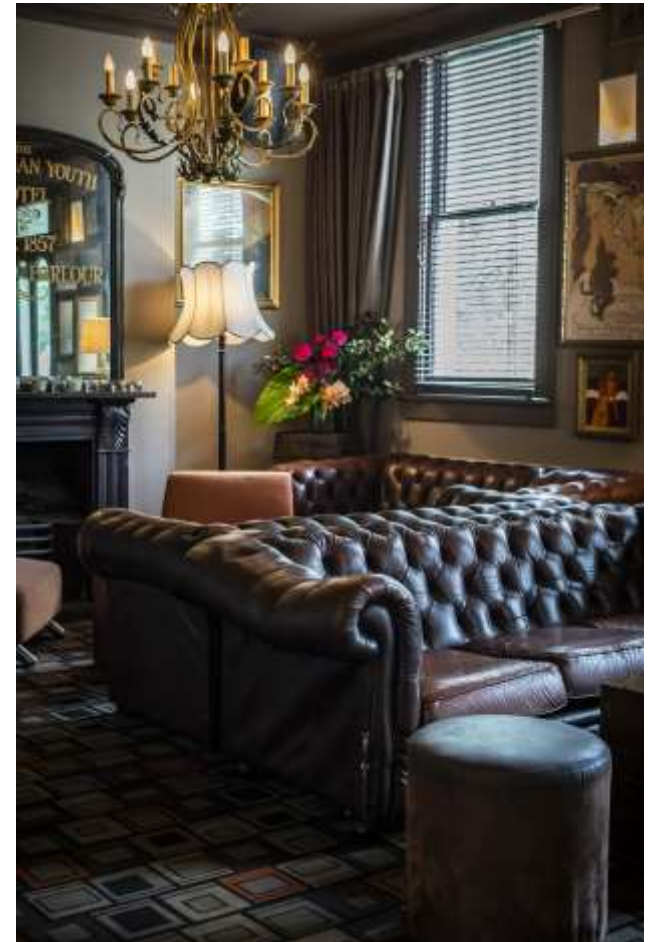
## MIDRIFF

Bar, Live entertainment, bar, AV, AC, toilets

Located adjacent to the bar on the corner of the building, the Midriff features comfortable leather chesterfield lounges, huge gold guiled mirrors and an extension of the (Nude) art work collection.

Best catered for from our pizza / canape menus.

- ◆ Seated 20
- ◆ Standing 20
- ◆ Available for exclusive hire, 20-40 persons
- ◆ Minimum spend \$1,500



**THE GLEBE**  
HOTEL





Located upstairs, is Nude, the hotel's private function space, named so after its former life as a brothel in the late sixties. A wonderland of grand chandeliers, baroque sofas and vintage nude art, Nude is available to hire as a whole or semi-space and also features a private snooker and games room.

'Nude' can be split into three different areas to cater for different size functions, Nude Lounge, Midriff and Pool Parlour.

### POOL PARLOUR

bar, Live entertainment, AV, AC, toilets

At the rear of the (Nude) bar, the Pool Parlour features funky retro lounges, a coin operated pool table, a 48-in-1 arcade machine and is our most secluded area.

Ideal for a sports team get together or a casual game of pool with your mates.

Best catered for from our pizza / canape menus.

- ◆ Seated 15
- ◆ Standing 20
- ◆ Available for exclusive hire, 20-35 persons
- ◆ Minimum spend \$1,000

**THE GLEBE**  
HOTEL







Located upstairs, is Nude, the hotel's private function space, named so after its former life as a brothel in the late sixties. A wonderland of grand chandeliers, baroque sofas and vintage nude art, Nude is available to hire as a whole or semi-space and also features a private snooker and games room.

'Nude' can be split into three different areas to cater for different size functions, Nude Lounge, Midriff and Pool Parlour.

### MIDRIFF & POOL PARLOUR

Bar, Live entertainment, AV, AC, toilets

Combining these two areas gives you direct access to the bar, the comfort of our chesterfield lounges in Midriff and the use of the pool table and arcade machine in Pool Parlour.

Ideal for events that require both fun and comfort for up to 70 persons.

Best catered for from our pizza / canape menus.

- ◆ Seated 35
- ◆ Standing 35
- ◆ Available for exclusive hire, 40 -70 persons
- ◆ Minimum spend \$2,500



**THE GLEBE**  
HOTEL





Located upstairs, is Nude, the hotel's private function space, named so after its former life as a brothel in the late sixties. A wonderland of grand chandeliers, baroque sofas and vintage nude art, Nude is available to hire as a whole or semi-space and also features a private snooker and games room.

'Nude' can be split into three different areas to cater for different size functions, Nude Lounge, Midriff and Pool Parlour.

## NUDE PRIVATE

Bar, Live entertainment, bar, AV, AC, toilets

Nude Private will afford you exclusive use of all areas in Nude

Ideal for those that require exclusivity for events of 80 – 130 persons.

Best catered for from our pizza / canape menus.

- ◆ Seated 65
- ◆ Standing 65
- ◆ Available for exclusive hire, 80—130 persons
- ◆ Minimum spend \$4,000, Sun—Thur
- ◆ Minimum spend \$5,000, Fri—Sat



**THE GLEBE**  
HOTEL



## RISQUE MENU —ALL PIZZAS \$45

### 1/2 METRE LONG RECTANGULAR

**SERVES 3-4 PERSONS** —*more substantial and an*

*ideal addition to your canape offering*

- Quattro formaggi (four cheeses) (v)
- Margherita (v, vgc)
- Mushroom, oregano, roast garlic (v, vgc)
- Melanzane, eggplant, olive, mozzarella (v, vgc)
- Zucchini, feta, chilli, mint (v, vgc)
- Prawn, chilli, basil, lemon oil
- Prosciutto, rosemary, potato
- Italian pork, fennel salsicce (sausage)
- Pepperoni, chilli, olive
- Crispy lamb, tzatziki, lemon
  
- *Gluten Free base + 5*
- *Vegan cheese + 5*



## EXPLICIT CANAPE MENU

### COLD ITEMS

- ◆ Cherry tomato, bocconcini & basil skewers (vg)
- ◆ Salmon tartare, horseradish cream, crostini (gc)
- ◆ Peking duck pancakes, shallots & hoisin sauce

### HOT ITEMS

- ◆ Cauliflower pakoras, cucumber yoghurt (vgc, gf)
- ◆ Pesto & parmesan arancini, aioli (v)
- ◆ Caramelized onion & blue cheese tarts (v)
- ◆ Falafels, harissa dip (vg, gf)
- ◆ Whipped feta, asparagus & mint tarts (v)
- ◆ Roast vegetable skewers, tomato & olive sauce (vg, gf)
- ◆ Lime salt & pepper squid, coriander aioli (gf)
- ◆ Fish fingers, tartare, lemon
- ◆ Chicken satay skewers, peanut dipping sauce (gf)
- ◆ Pork & veal sausage rolls, tomato suace
- ◆ Spicy lamb koftas, tzatziki (gf)
- ◆ Pastrami slider, red sauerkraut, mustard
- ◆ Mini cheese burgers
- ◆ Beef & Guinness pies, tomato sauce

### DESSERT

- ◆ Lemon meringue pies (gf)
- ◆ Chocolate & hazelnut brownie, vanilla cream

SELECTION OF 3 ITEMS - \$14 PER PERSON

SELECTION OF 5 ITEMS - \$22 PER PERSON

SELECTION OF 7 ITEMS - \$30 PER PERSON

## GRAZING PLATTER

Selection of artisan cured meats, cheese, pickled veg, olives, dips, lavosh & crusty bread

\$15pp minimum order 10 persons





## BEVERAGE PACKAGES

### BASIC PACKAGE

\$40 PP 2 HOURS

\$55 PP 3 HOURS

\$70 PP 4 HOURS

#### DRAFT BEER & CIDER

Tooheys New, Hahn Super Dry,  
Young Henry's cider

#### BOTTLE / CANS BEERS

Heineken zero, James Boags premium  
light, XXXX Gold

#### WINE SELECTION

Emily Sparkling, Irvine Rose,  
Johnny Q Chardonnay, Johnny Q Shiraz

#### NON-ALCOHOLIC

Soft drinks & juices

### PREMIUM PACKAGE

\$50 PP 2 HOURS

\$65 PP 3 HOURS

\$80 PP 4 HOURS

#### DRAFT BEER & CIDER

Tooheys New, Hahn Super Dry, Furphy,  
Little Creatures PA, Young Henry's cider.

#### BOTTLE / CANS BEERS

Heineken zero, James Boags premium  
light, XXXX Gold

#### WINE SELECTION

Guerrieri Rizzardi Prosecco, Babich Sauvignon Blanc, Norfolk Rise Pinot Grigio, Triennes Rose, Underground Pinot Noir, Sew & Sew Grenache Shiraz Mourvedre

#### NON-ALCOHOLIC

Soft drinks & juices

### PLATINUM PACKAGE

\$60 PP 2 HOURS

\$75 PP 3 HOURS

\$90 PP 4 HOURS

#### DRAFT BEER & CIDER

Tooheys New, Hahn Super Dry, Furphy, Little Creatures PA, Guinness, Heineken, Young Henry's cider.

#### BOTTLE / CANS BEERS

Heineken zero, James Boags premium light, XXXX Gold

#### WINE SELECTION

Louis Bouillot, Blind Corner Chenin Blanc, Scarborough Chardonnay, Triennes Rose, Akarua Rua Pinot Noir, Nugan Sangiovese, Domaine Naturalist Syrah

#### NON-ALCOHOLIC

Soft drinks & juices



**THE GLEBE**  
HOTEL

**ADDITIONS > HOUSE SPIRITS + 10 PP**

We support responsible service of Alcohol

**NB YOUR BEVERAGE TAB IS CAPPED AT YOUR SELECTED AMOUNT PER PERSON.**

*Once this amount is reached you have the option to add to your tab or revert to a cash bar.*





We love hosting events

- TO ENQUIRE—

[info@theglebehotel.com.au](mailto:info@theglebehotel.com.au)